

maze Dripper & Arrow Kit

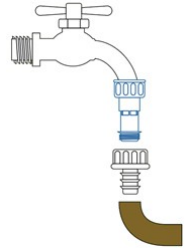
Components



1. Connecting to water source:

Drip irrigation works best at average to low pressure. As such we have include a pressure reducer that must be connected. This is especially important if you have very high pressure. Please note this does not reduce static pressure (when there is no water flow).

The pressure reducer can be screwed directly to the tap. Now the tap connector can be tightly attached to the bottom of the Pressure Reducer (see pic on the right).



2. Connecting your polytube

First uncoil the polytube and lay it out so it will become easier to position and weave in your garden. Connect one end to the tap connector (as per above). You will note these fittings have 3 barbs (see pic on the right) which means you do not need a ratchet clamp as the polytube will not slip off the connector. However, this does mean it can be difficult to get the poly tube onto the fitting. The polytube can be softened by placing the end in very hot water. After it has been in the water for a minute you can push the connection on more easily.



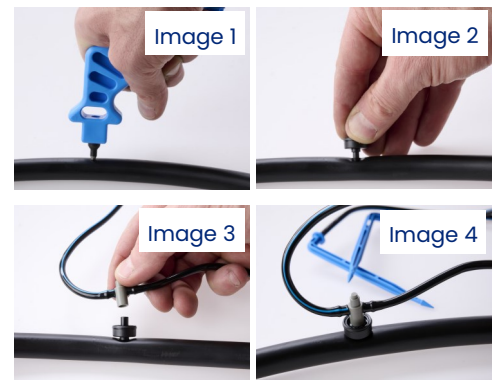
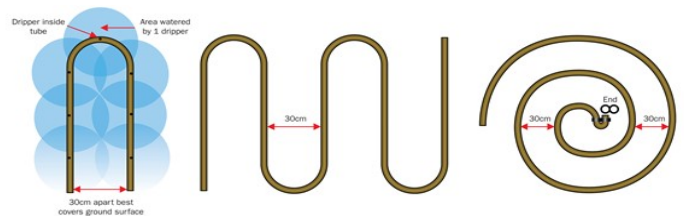
3. Layout and insert drippers

The layout of your garden will determine the best way to lay out the polytube and drippers. Below are some popular options. Keep in mind that water will spread around 15cm on each side of the dripper (30 cm diameter). Therefore, the polytube should be around 30cm apart to cover the area between them.

The pipe can be fixed to the ground with the stakes provided. It can also be placed under mulch in a garden bed. You can use the Joiner and Tee fittings to join to other pipes or run offshoots with the Tee.

The drippers can be placed anywhere along the tube. They can be evenly spaced out sporadically placed based on where your plants are or how much water is need in certain spots.

Once you decide where you want the drippers use the Punch Tool and press firmly into the tube till a hole is made (Image 1). Then press the barded side of the dripper till it's firmly inside (Image 2).



4. Connecting Arrows

To connect your arrow dripper to your main dripper, you simply need to push the center part (shown in Images 3 & 4) into the main dripper. The Arrows can then be positioned in your desired location.

5. Closing off the end

Once the drippers and tube are in place you can cut off any extra which is not needed and close the end of the polytube. This is done by using the Line End fitting. Throat the tube into one of the holes in the fitting then bending the tube and inserting into the other hole (see pic on the right).

This way it can be easily opened if you want to connect to another fitting or flush out to clean. Multiple ends are supplied although you may only need one.

